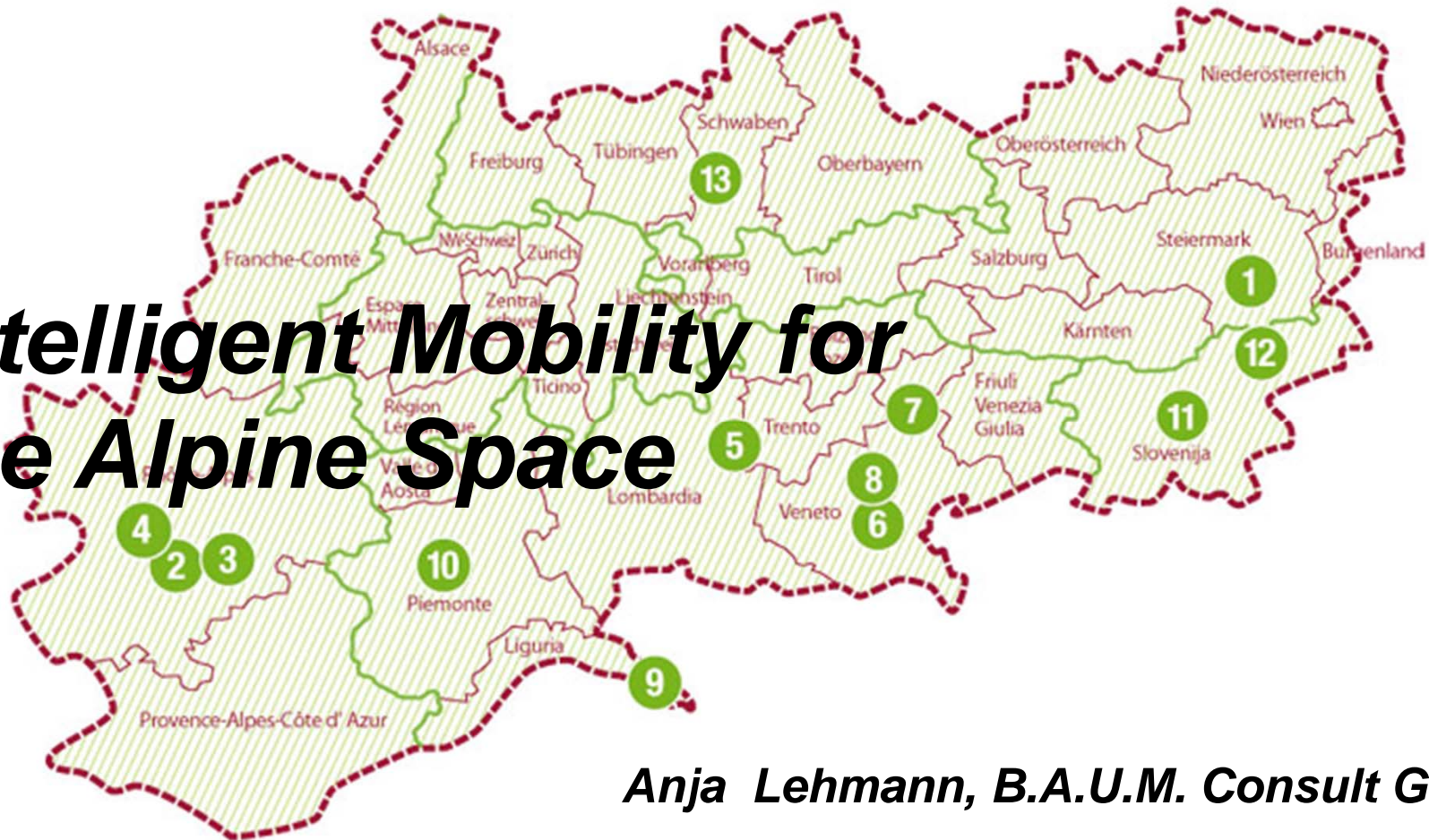




CO₂-Neutral Transport for the Alpine Space



Intelligent Mobility for the Alpine Space









Anja Lehmann, B.A.U.M. Consult GmbH

Overall goals of CO₂-NeuTrAlp

- **Develop a project of excellence and strategic relevance**
- **Develop and apply innovative solutions**
- **Set standards in transport and wise use of endogenous resources**
- **Develop strong perspectives for regional economies**
- **Implement local, regional, national and EU policy objectives**



CO₂NeuTrAlp activities and results

-  15 Project Partners from 5 countries
-  13 Pilot Projects
-  13 Local Implementation Networks
-  Transnational Observer and Follower Network
-  Guidelines
-  Strong transnational push towards use of Renewable Energies in transport



Using the right technology

- Biofuels
- Electric mobility



CO₂-NeuTrAlp Pilot Projects

- 🚗 **Graz (AT)** Biogas & Public Transport Fleet
- 🚗 **Pays de Romans (FR)** PPO-Mobility & Waste Collection
- 🚗 **Villard de Lans (FR)** E-Mobility & Winter Tourism Transport
- 🚗 **Safari Park Peaugres (FR)** E-Mobility & Summer Tourism Transport
- 🚗 **Lago d'Idro (IT)** Hybrid or Solar Boat & Lake Transport
- 🚗 **Padova (IT)** E-Bikes & Solar Charging and Rental System
- 🚗 **Interporto Padova (IT)** E-Truck & City Logistics
- 🚗 **Belluno (IT)** E-Mobility & Public Administration Fleet
- 🚗 **Parco Nazionale Cinque Terre (IT)** E-Mobility & Agriculture
- 🚗 **Torino (IT)** Solar Energy for LNG Compression & Public Transport
- 🚗 **Allgäu (DE)** Pedelec rental system & Tourism and Smart Grid
- 🚗 **Litija (SI)** Intermodality and E-Mobility & School Transport and Commuting
- 🚗 **Maribor (SI)** Intermodal E-Mobility & Public Transport and Tourism



Greening all transport sectors



Public transport



Tourist transport

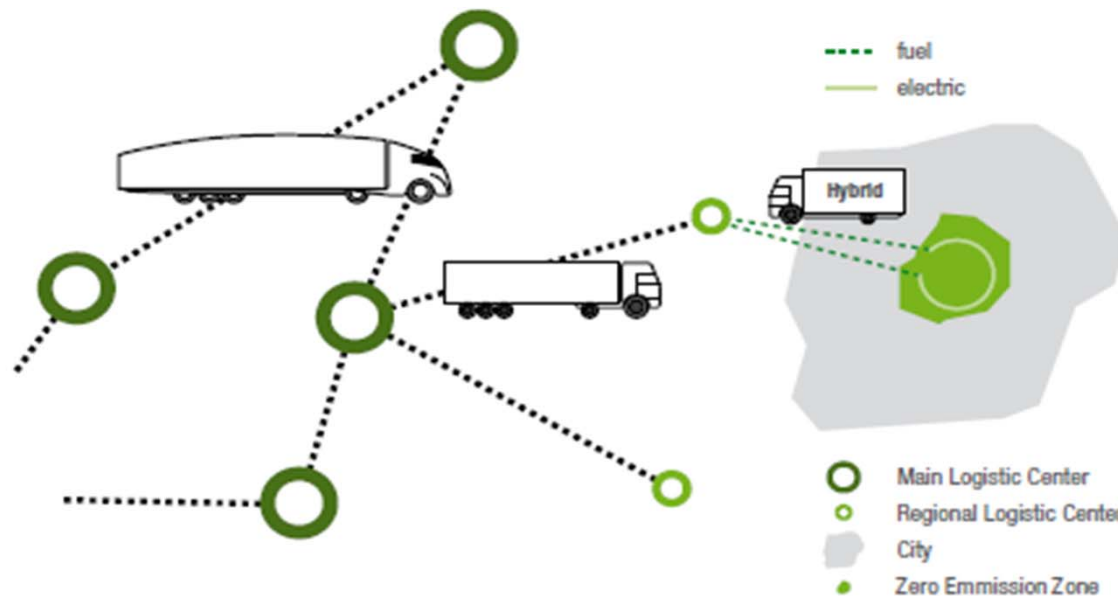


Fleets



Greening all transport sectors

City logistics

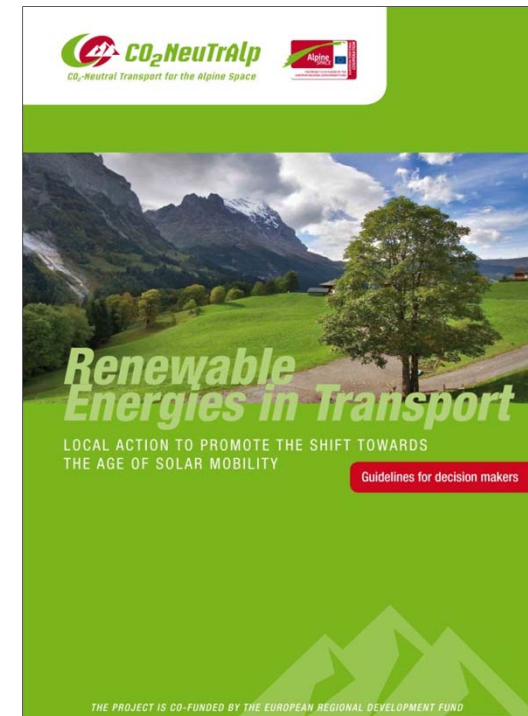
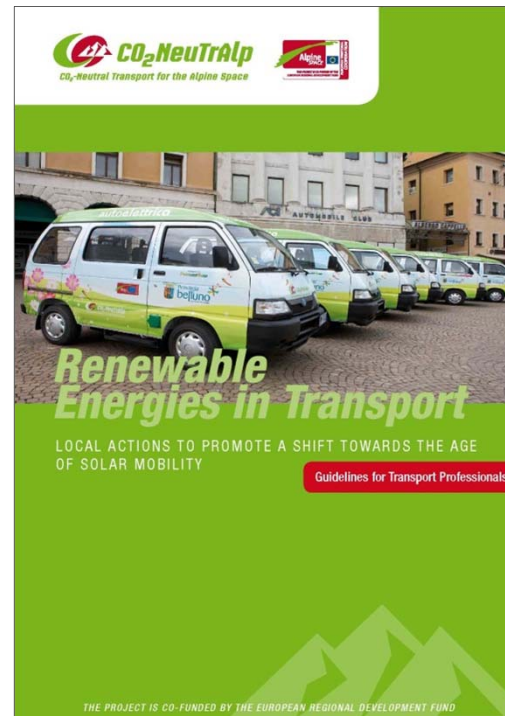


Agricultural transport



Guidelines

- practical advises for followers: decision makers and transport professionals
- describing challenges, opportunities, tasks
- giving insight into the work process of the project partners and their results



Thank you for your attention!

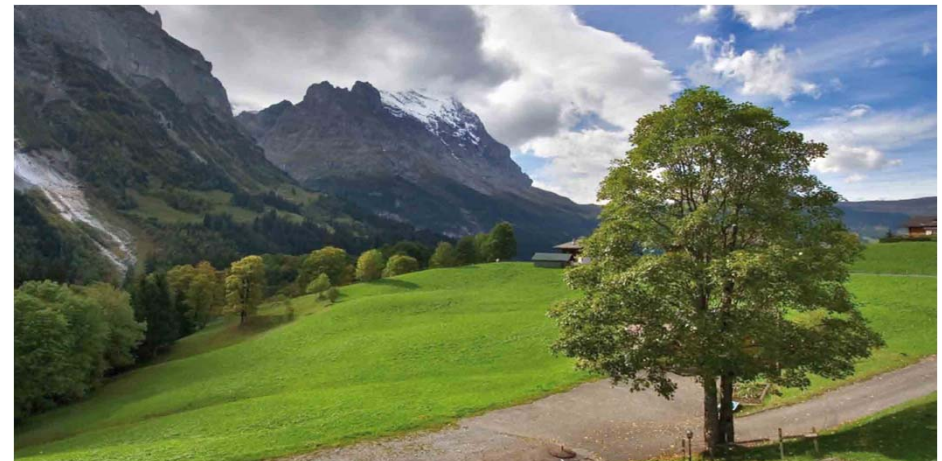


Anja Lehmann

B.A.U.M. Consult München
Gotzinger Str.48/50
81371 München

a.lehmann@baumgroup.de

www.baumgroup.de



CO₂-NeuTrAlp partners

- ❖ B.A.U.M. Consult GmbH München (lead partner)
- ❖ Allgäunetz GmbH
- ❖ Austrian Mobility Research FGM - AMOR gemeinnützige Gesellschaft m.b.H.
- ❖ Comune di Torino, Mobility Department and GTT Public Transport Company
- ❖ Dolomiti Bus Spa Comune di Padova, Mobility and Traffic Division
- ❖ Holding Graz
- ❖ Parco Nazionale Cinque Terre
- ❖ Provincia di Belluno, Mobility and Energy Services
- ❖ Provincia di Brescia, Transport Department
- ❖ Center za razvoj Litija (RCL - Regional Development Centre of Litija)
- ❖ Rhônealpiénergie-Environnement
- ❖ Helmholtz Zentrum München – Deutsches Forschungszentrum für Gesundheit und Umwelt
- ❖ Università Bocconi, CERTeT - Centro di Economia Regionale, dei Trasporti e del Turismo
- ❖ University of Maribor, Faculty of Civil Engineering, Institute of Transportation Sciences