



Funded by the European Union. Views and opinions expressed are however those of the author(s) only and do not necessarily reflect those of the European Union or the European Education and Culture Executive Agency (EACEA). Neither the European Union nor EACEA can be held responsible for them.

SUSTAINABILITY

in culture, arts and community organisations



Index

Planet in crisis	4
Cultivating Change:	7
A Partnership for Alpine Sustainability	
CIPRA - For a sustainable future in the Alps	8
inatura - Natural history Museum in Dornbirn	10
La Foresta - community academy	12
Coming together to create a Project	14
The Framework	18
What are SDG's?	20
Sustainability in Inatura: Networks for New Ideas	22
Exploring Issues	24
inatura's Sustainability Tools	32
A sustainable renovation of a museum	36
Visit and insight of domus: redesign, repurpose, refurbish	38
From Awareness to Action	42
What is NEB?	44
Arriving in Rovereto	46
Insights and Exploration (sharing practices)	47
S4T	49
Ecolab	52
Cooltours	56
Further Information	63

This comic book was created as part of the Erasmus+ project “CultureAlps: connect, share, act!”, which shows how art and culture can inspire creative solutions to the climate crisis. The project promotes cooperation between organisations in art, culture, and climate protection, sharing best practices to make the cultural sector more sustainable and engaged. Partners from Liechtenstein, Italy, and Austria explore how exhibitions and events can be more climate-friendly, drive behavioral change, and make the three planetary crises – global warming, biodiversity loss, and pollution – tangible, creating learning spaces that inform and motivate action in daily life and politics.

Dive in, enjoy reading, and let yourself be inspired!

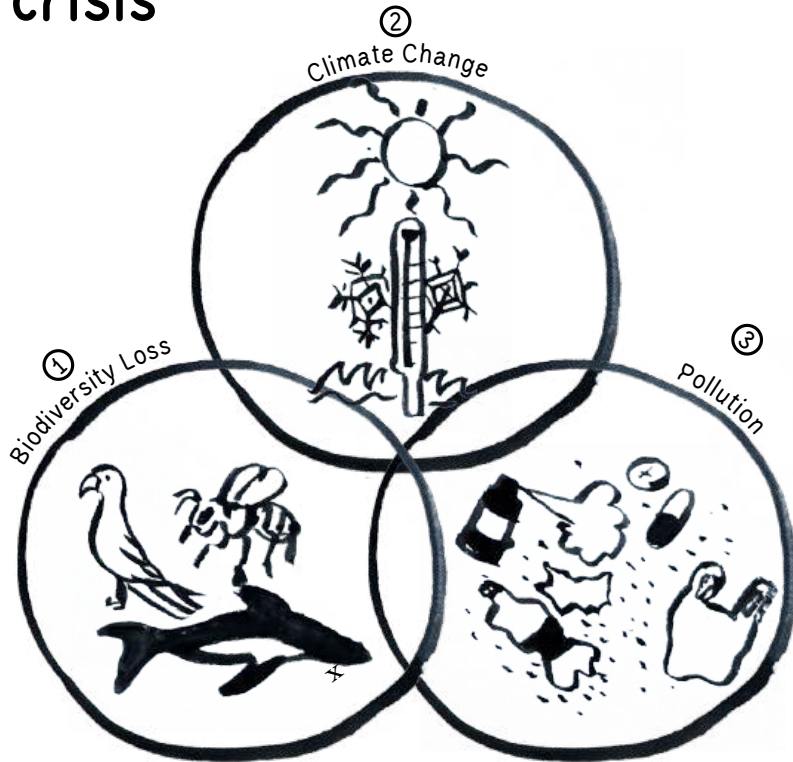
— The CultureAlps Team



Funded by the European Union. Views and opinions expressed are however those of the author(s) only and do not necessarily reflect those of the European Union or the European Education and Culture Executive Agency (EACEA). Neither the European Union nor EACEA can be held responsible for them.

Planet in crisis

Reference: <https://phys.org/news/2024-11-plastics-contribute-triple-planetary-crisis.html>

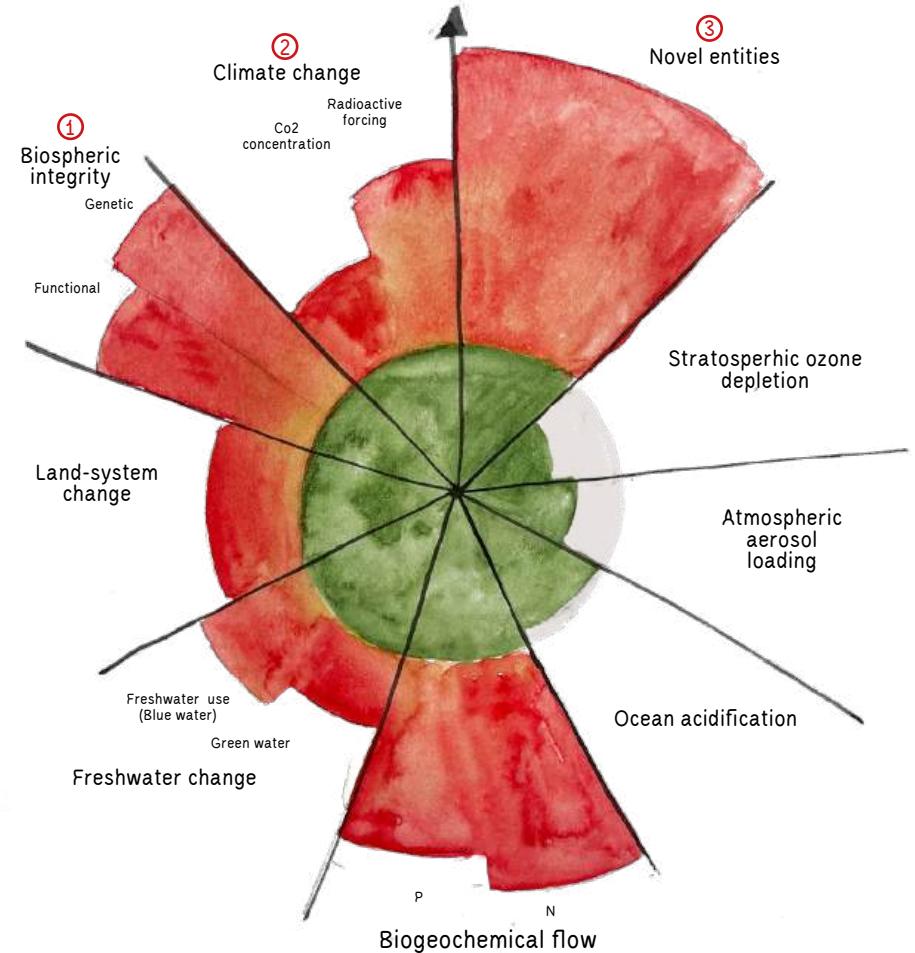


Have you ever heard about triple planetary crisis? It refers to three pressing threats putting our planet's health and future at risk:

- **Climate change:** rising greenhouse gases heat up the Earth's atmosphere, bringing weather patterns and entire ecosystems out of balance.
- **Biodiversity loss:** species and their habitats are disappearing at alarming rates
- **Pollution:** plastics, chemicals and excess nutrients are accumulating and contaminating soil, water and air/the Earth's system

But how do we know when human activities are putting too much pressure on planet Earth? Scientists developed the "Planetary Boundaries", a framework that defines a safe operating space, which allows humanity to enjoy a good life based on a healthy planet. The Planetary Boundaries draw limits to nine processes (see picture below) that ensure the functioning and stability of the Earth's system. The processes are interlinked - crossing one boundary can destabilize the Earth's system. See picture on page 5.

Planetary boundaries: 9 boundaries assessed, 6 crossed (2023)



Source: "Azote for Stockholm Resilience Centre, based on analysis in Richardson et al 2023"

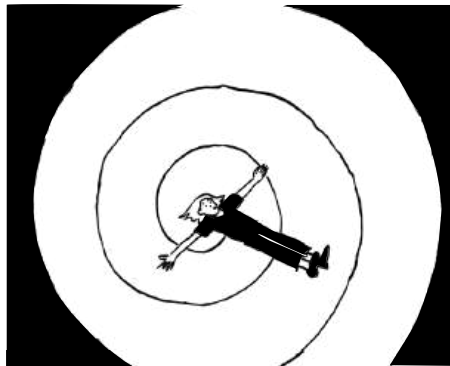
The key questions that we asked ourselves in the project were: How can we transform and sustain our organization to minimize their impact on the planet, and how can we share this knowledge effectively, while also inspiring others to take meaningful action?

Human activity has already exceeded six out of nine planetary boundaries. Important: acting together could still turn things around.

The Big Three

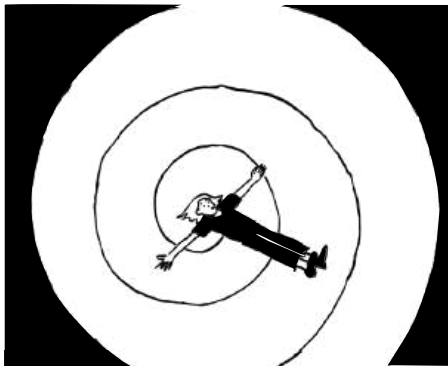


Climate crisis, biodiversity loss, environmental pollution: the three planetary crises, which have to be understood as one global crisis, threaten our livelihoods and affect all areas of our lives.



Urgent measures are needed to tackle these challenges, not only at an individual level, but also at a systemic level: therefore the participation of all in democratic processes is needed.

However, this can quickly lead to a feeling of being overwhelmed and helpless, as the crises are complex.



Learning from each other: NGOs offer deep insights into today's major crises, while museums bring expertise in education and engagement. Both also need to focus on being sustainable and share what works within their sectors

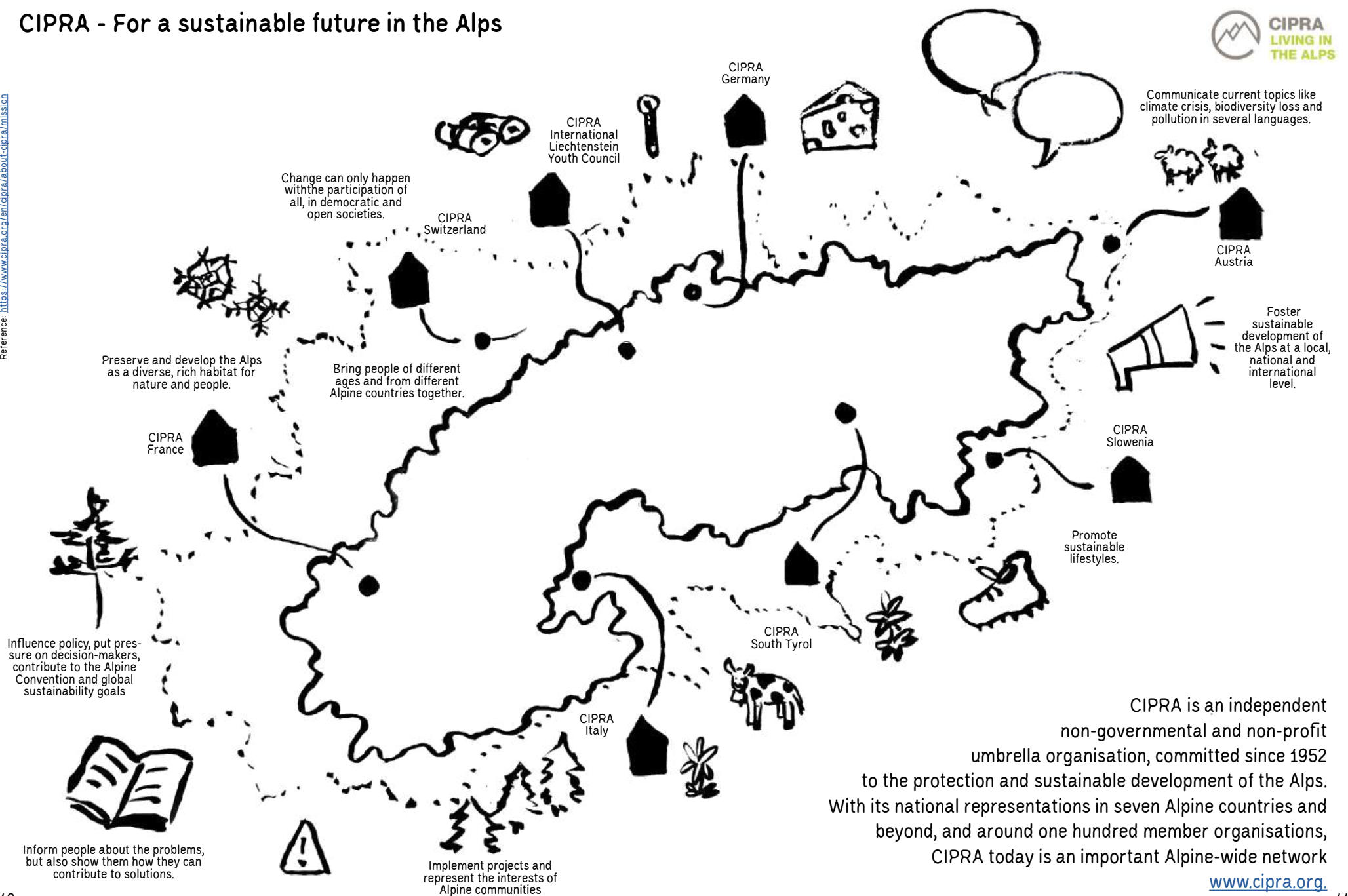
Guidelines and labels already exist, but smaller institutions especially need practical, hands-on methods for managing resources sustainably. Cooperation can also help reduce resource use.

Cultivating Change: A Partnership for Alpine Sustainability



This initiative brings together three key partners: CIPRA, with its expertise in Alpine sustainability; Inatura, the natural history museum in Dornbirn, known for creating sustainable exhibitions; and La Foresta, a community academy that engages the public through participatory activities.

Reference: <https://www.cipra.org/en/cipra/about-cipra/mission>



CIPRA is an independent non-governmental and non-profit umbrella organisation, committed since 1952 to the protection and sustainable development of the Alps. With its national representations in seven Alpine countries and beyond, and around one hundred member organisations, CIPRA today is an important Alpine-wide network

www.cipra.org



inatura
Natur, Mensch und Technik erleben

The inatura nature discovery centre is not only a modern natural history museum, but is also committed to sustainability in all areas. Our areas of work — collecting, preserving, researching, exhibiting and communicating — are characterised by sustainable and continuous development.

<https://www.inatura.at/>



Other institutions, NGOs or experts come to us with ideas.



We are open to collaboration and transform other people's ideas and take them seriously. We discuss how ideas could be made reality!



We look through our archives, make new connections and foster research to understand how to grow ideas.



From an idea, a project is born. We gather scientists, engineers, designers and educators to build an event or exhibition.



Things are possible if people talk with each other and support their message.



It may not always be easy and some things like making connections or exploring new technologies and sharing information makes today's projects more possible! Cooperation here is the key!

Coming together to create a Project

How can collaboration / a network help to be more sustainable?

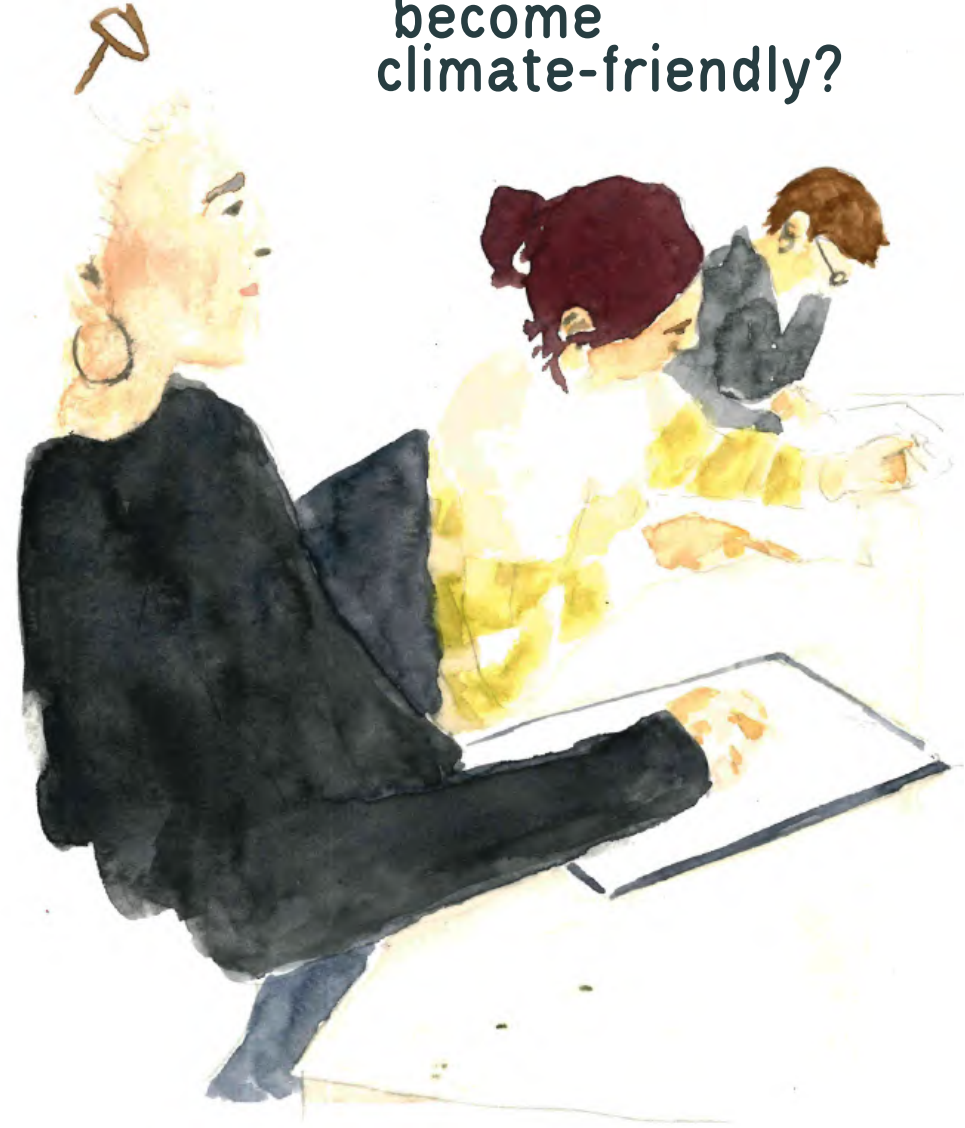
*What practical and pragmatic approaches exist
- including small institutions?*

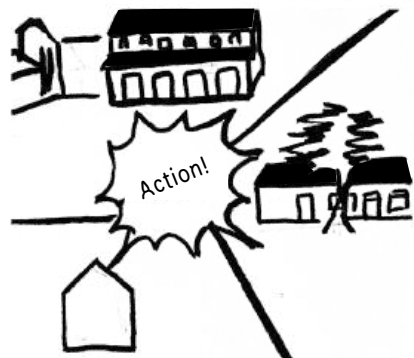
*How can we increase the use of existing tools
and share them in the sector?*

In January 2025, we organized a transnational meeting in Vorarlberg with our partners to kick off the project. As our goal is to learn about sustainability in cultural institutions, we used the example of an exhibition to show how sustainable practices can be applied across all areas of museum, in the procurement of materials, the recycling of exhibition objects, etc.

It will show how cultural institutions can also be sustainable and set a good example by two ways: raising awareness on how important sustainability is in the culture sector and how cultural institutions can join the fight against the climate crisis by using sustainable materials, recycling and reusing exhibition objects, etc.

How can cultural organizations become climate-friendly?





The emergency has brought our three institutions together

Because we believe that coming together to work united on these three crises will be better for all of us



CIPRA had the idea to create a project to foster cooperation between NGO's institutions.

So, CIPRA checked their contact list and reached out to potential partners.



After back and forth discussions, the team now includes Inatura (a nature museum) and La Foresta, a cultural association along with the DOMUS Museum. CultureAlps project was created.

CultureAlps follows a two-way approach: the first objective is to learn about how cultural institutions.



And to share good practices so that the sector in itself becomes more sustainable and takes part in fighting the climate crisis.

The second objective is to find new ways of communicating the three planetary crises.



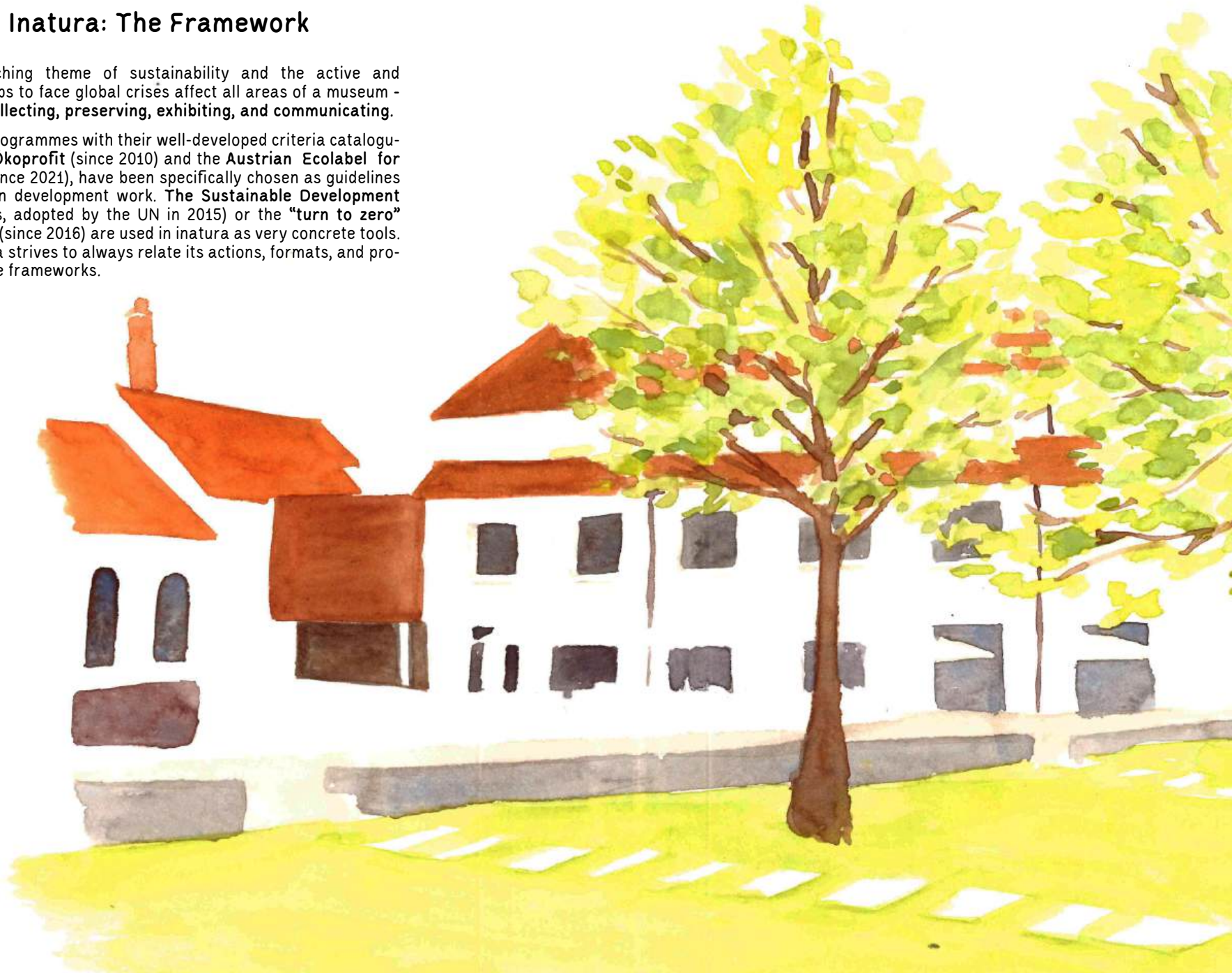
Find new ways of communicating the three planetary crises through cultural events and create new innovative learning spaces so visitors to these events are motivated to act.

To reach this goal, we wrote down a couple of questions to guide our project and to seek answers to them.

Sustainability in Inatura: The Framework

The overarching theme of sustainability and the active and concrete steps to face global crises affect all areas of a museum - research, collecting, preserving, exhibiting, and communicating.

In inatura, programmes with their well-developed criteria catalogues, such as Ökoprofit (since 2010) and the Austrian Ecolabel for Museums (since 2021), have been specifically chosen as guidelines for their own development work. The Sustainable Development Goals (SDGs, adopted by the UN in 2015) or the "turn to zero" programme (since 2016) are used in inatura as very concrete tools. Thus, inatura strives to always relate its actions, formats, and projects to these frameworks.



What are SDG's?



Scan for more!



Source: 17 SDGs, <https://sdgs.un.org/goals>, adjusted Illustrated Icons



They provide a shared blueprint and Common Language. This allows for coordinated action. This common language simplifies communication and partnership.

The SDGs are unprecedentedly ambitious, and no single entity can achieve them alone. They explicitly encourage collaboration between public and private sectors, sharing knowledge, technology, and financial resources to tackle problems that are too large for any one group.



They drive measurement and accountability. Each goal has specific, measurable targets and indicators. This transforms national aspirations into trackable objectives.

Each year, the UN System collaborates to produce the annual SDG Progress Report for the Secretary-General. The report is grounded in the global indicator framework and synthesizes data from national statistical systems and regional sources.



The SDGs are a useful tool, also used for various different issues in nature. The 2030 Agenda for Sustainable Development, adopted by the UN in 2015, is a global plan of action for peace, prosperity, and the planet. At its core are the 17 Sustainable Development Goals (SDGs), which serve as an urgent call for all countries to work in partnership.

The goals are interconnected, recognizing that ending poverty must be combined with strategies to improve health and education, reduce inequality, spur economic growth, and simultaneously tackle climate change and environmental protection.



They encourage long-term thinking. The goals are set for a 15-year period (2030 Agenda), pushing entities to look beyond short-term election or profit cycles. This promotes sustainable investment in areas like infrastructure, education, and environmental protection, which have long-term payoffs but may not provide immediate returns.

In essence, the SDGs' usefulness lies in transforming the overwhelming challenge of "making the world a better place" into a structured, actionable, and collaborative plan. They are a practical toolkit for navigating complex 21st-century challenges.

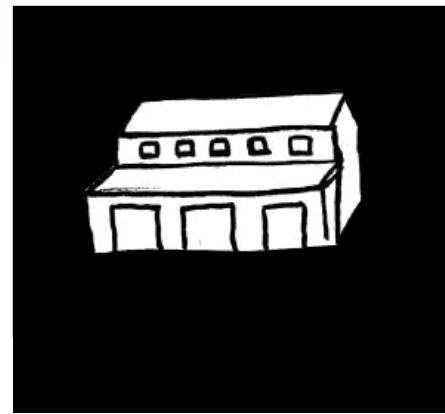
Networks for New Ideas

inatura's core mission is to convey knowledge about nature in an interactive way. It does this with great openness, through the openness of NGOs, associations and other groups that come to us. And from this created space we work with external experts and specialists (this includes universities and colleges) and communicate the partnership throughout the exhibition.

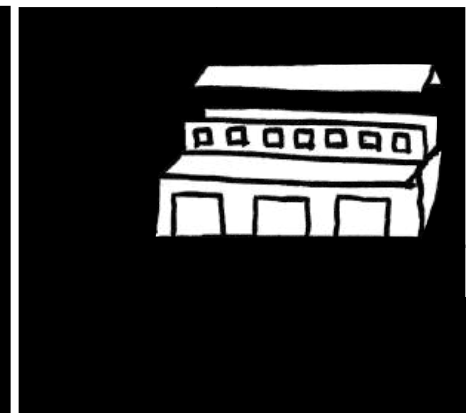
It is always on the lookout for new ideas. Seeks beyond the borders — for different points of views and seeking the competences of others when inatura reaches a boundary.

inatura isnt afraid of entertainment value and loves working and thinking in networks. It is aware of its limits and therefore is always on the lookout for new partners to collaborate woth and expand its network. And when there is an overlap of interest, a new idea is being created and together we build projects for the public to enjoy.

I
N
A
T
U
R
A



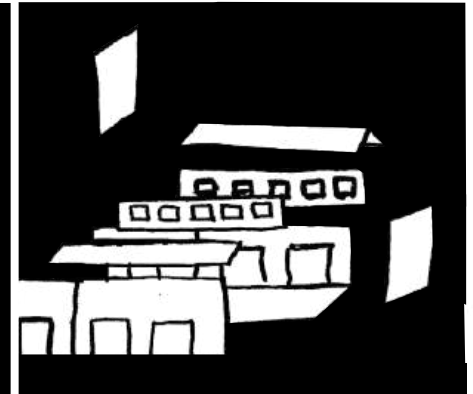
In Inatura welcomes the Ideas



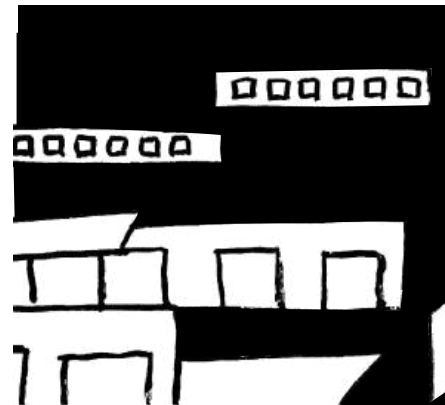
explores



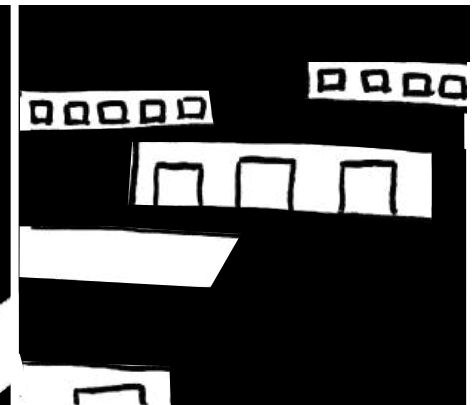
pushes boundaries



tackles problems



embraces the unknown



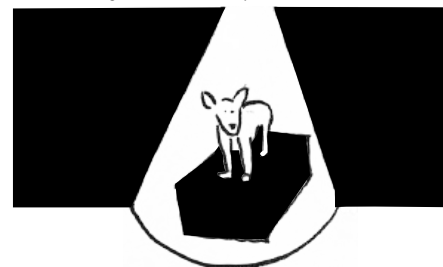
is open to what will come

Exploring Issues, Not Just Exhibits

While walking through the museum, we stopped at certain stations to discuss current issues that inatura is tackling by setting up certain topics in an accessible way, for visitors to come close and to explore the topic on different levels. Not every topic is met with joy by visitors so it is important to have a dialogue and listen to their concerns and questions...



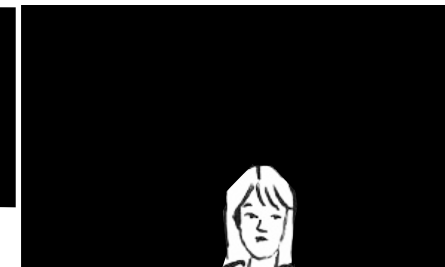
inatura tackles regional problems controversy about the return of wolves. Without telling people what they should think about the issue.



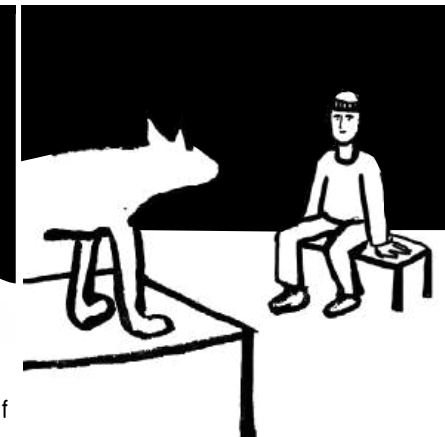
They displayed a wolf but not behind glass. The animal was killed by a train in Vorarlberg in 2024. And we show the number of wolf attacks in relation to the numbers of livestock grazing in the mountains in the same year.



Anyone can get very close to the wolf and form their own opinion.



One begins to think, wonder and observe this other being. You ask yourself questions, get curious and seek for more information.



Curiosity meets Collaboration



What is this?



Hmmm...



Let's see...

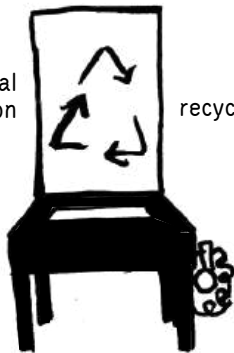


...
interactive



hmm which birds begin singing before sunrise in spring?

technological collaboration with a university



recycled tool

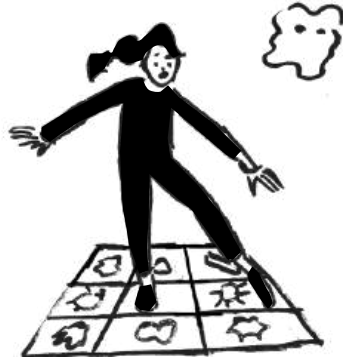
there are many ways to transform an object to be reusable for new exhibitions.



Dancing with information



Through movement you can explore



the connection between blood and the immune system



Players find themselves inside their own vascular system



Various blood components appear, as well as viruses and bacteria

CURED!
fin



If you quickly step on the correct symbol, you've fended off the bacteria and will collect points and knowledge.

collaboration



interactive

multi media



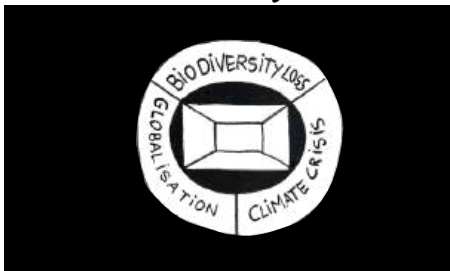
Combine movement, technology and curiosity to engage with information.



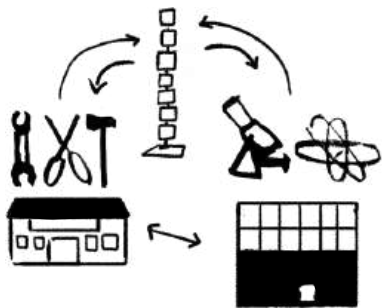


Science communication
as a basis and
a mouthpiece
for sustainable
issues!

inatura's Sustainability Tools:



Permanent and special exhibitions repeatedly present the interplay and possible courses of action regarding our big three. inatura's concrete measures are:



For every project or exhibition inatura is in close contact with universities, colleges and local experts to collaborate and innovate collectively.



For inatura it is important to create exhibition furniture which is modular to enable its reuse in other themed exhibitions. Here, we also collaborate with universities.



Scan for more!

<https://www.oekoprofit.info/0x6c32968b0koprofit/>

Labels can act as a compass, guiding organizations to become more aware of sustainability while showcasing their steps toward change. ÖKOPROFIT is a public-private partnership that provides companies with a practical, action-oriented environmental management programme focused on raising awareness and implementing effective measures.



Scan for more!

<https://www.umweltzeichen.at/en/culture/museums>

Austrian Ecolabel-certified museums integrate sustainability and socio-political responsibility into both their daily operations and exhibition planning.



Scan for more!

<https://www.digra.org/media/files/greenevent-broschure-final-juni2019.pdf>

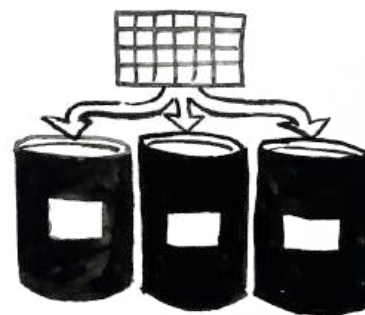
For smaller organizations, consult green event guides, which offer practical, easy-to-apply recommendations.



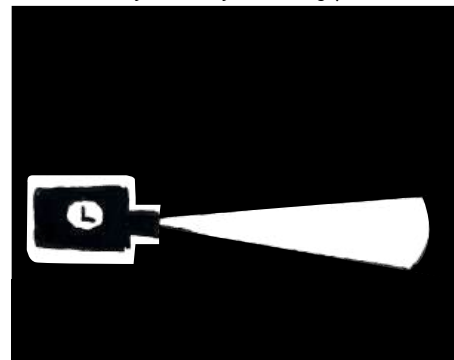
A screen at the museum entrance is dedicated to showing the bus schedule in a simple and comprehensive manner, so as to make travelling by bus more convenient!



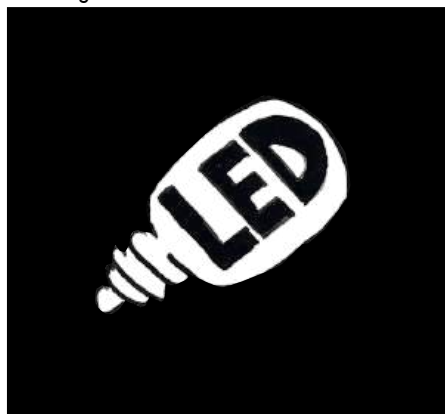
Sustainability in infrastructure: the museum switched to environmentally friendly cleaning products.



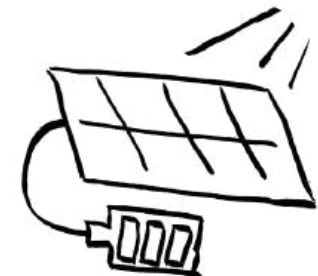
inatura has its own waste management throughout the museum.



Significant reduction in the number of projectors and PCs in the permanent exhibition.



Conversion to LEDs throughout the building.



inatura has its own In-house PV system. Installation of automatic water dispensers in the toilets. Conscious purchasing for maintenance and administration. Waste management throughout the building.



Conveying knowledge about nature is in our core mission, our educational programmes for schools address the interplay between biodiversity promotion, climate change and adaptation and species knowledge.



The sustainable renovation of a museum

During the second half of the exchange we visited Domus, a municipal museum built according to circular construction principles.

Redesign, Repurpose & Refurbish



With Zirkulie, the Lebenswertes Liechtenstein Foundation is focusing on circular construction. With construction activity being particularly high in Liechtenstein, around 90% of waste comes from the construction industry. Like other waste, much can be reused or at least recycled.



For example, concrete demolition material is reused as a basis for new recycled concrete, which has practically the same properties as new concrete but can make up to 80% of the new concrete.



Another major lever is reusable components: by reusing components, the converted space not only gains character, but resources are also saved as no new components need to be produced.



After Caroline and Toni took over the management of the Schaan village museum domus in 2021, they realised that some aspects were not ideal for museum and gallery operations.



The carpeted floor created more of an office atmosphere than a gallery atmosphere, the spotlights were not optimally positioned, the acoustics were poor, there was no reception desk, no clear external signage and a number of other issues that were not ideal.



The desire arose to redesign the interior, but at the same time to do so with as few resources as possible.



Scan for more!



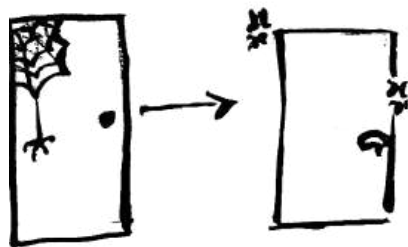
The base for the new canopy was cast from recycled concrete



Thanks to the close cooperation between the building authority, Zirkulie, the team of architects and the craftsmen involved, almost all of the building components could be sourced from the village itself.



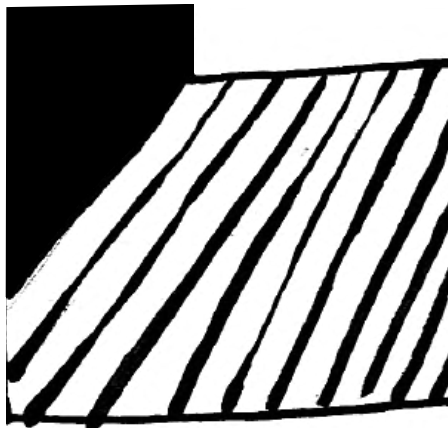
Some of them were so close that they could be carried across the street on foot.



and the old door was refurbished and redesigned to be barrier-free instead of being replaced.



Where old floors were found under the carpet, these were replaced, and in one room,



a former stage floor from a building that was being demolished found a new home



Other components, such as the old carpet, found a new purpose as part of the new sound insulation on the ceiling.



Those involved are very happy with the result. The new rooms have character, and parts of them are reminiscent of the buildings and places they came from.



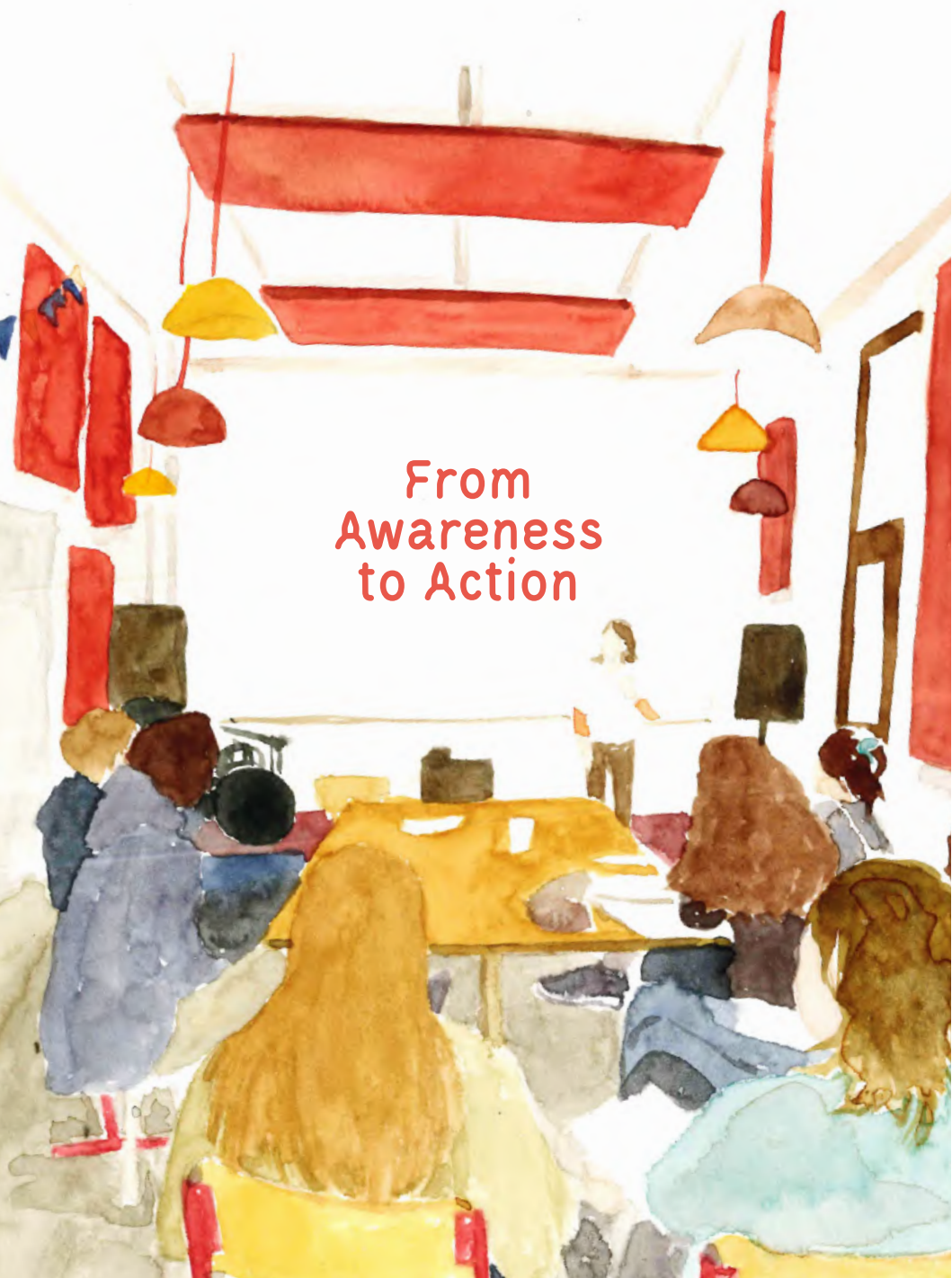
Working with experienced craftspeople, the team managed to ensure that the rooms still meet the highest aesthetic standards.



Although the materials were reused, a lot of effort and energy went into refurbishing them, so that some of the components look better than new and do not give off a 'reuse vibe' at all.

The domus team and everyone involved are very happy with the result and the resource-conscious renovation, which will be able to tell the stories of demolished buildings in the village using reused objects, but also serves as an example of how resource-saving renovation can be successful.





From Awareness to Action

In the 2nd transnational meeting in Rovereto we specifically focused on:

*How can culture help us deal with crises?
How can sustainability issues be communicated in museums and other cultural events in such a way that visitors feel motivated to take action?*

La Foresta has extensive experience in community engagement. To bring its topics closer to people, La Foresta goes directly to where communities are and starts meaningful conversations. In its work, La Foresta embodies the principles of the New European Bauhaus — beautiful, sustainable, together — and follows the NEB Compass, which emphasizes transdisciplinarity as well as multi-level and cross-sector collaboration among stakeholders.

La Foresta excels at creating unconventional and convivial formats that engage community members and public administrators alike in exploring pressing environmental and social issues.

During this activity, the group explored how cultural institutions and NGOs can use new methods of education/mediation to communicate about the planetary crises and sustainability. Throughout the exchange, two key questions remained at the forefront: how can we foster collaboration between cultural institutions and NGOs, so that they can create together new learning spaces for their visitors/participants of events? And how can we reach more people through culture, enable for them to join the fight against these crises and get active?

What is New European Bauhaus? (NEB)



SUSTAINABILITY
AESTHETICS
INCLUSION

It is an open invitation to address complex societal problems through collective co-creation, building on participation at all levels. Guided by three inseparable principles, it seeks to steer the transformation of our societies: Sustainability, from climate goals to circularity and biodiversity. Aesthetics, emphasizing quality of experience and style. Inclusion, through valuing diversity and securing accessibility.

The New European Bauhaus is a dynamic, transdisciplinary movement in the making. It serves as a vital bridge, connecting the spheres of science and technology with those of art and culture. This initiative transforms our green and digital challenges into a springboard for positive change, improving how we live.



By bringing together citizens, experts, businesses, and institutions, the New European Bauhaus fosters beautiful, sustainable, and inclusive living. It creates a platform for connection and provides access to EU funding to turn bold ideas into reality.



The New European Bauhaus connects the "Green Deal" to Real Life. The European Green Deal is a massive, technical policy framework aimed at making Europe climate-neutral by 2050. For many citizens, this can feel abstract, technical, and even intimidating (e.g. regulations, carbon taxes).



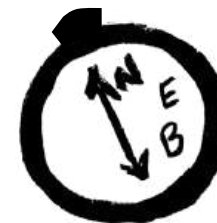
It acts as an "Innovation Accelerator" and "Bridge Builder". Across Disciplines: It brings together scientists, architects, artists, engineers, students, and policy-makers in one conversation. Across Sectors: It connects the public sector, private businesses, and civil society to co-create solutions. Across Geographies: It links urban and rural areas and encourages learning between different regions of Europe.



The NEB is not just about theoretical concepts. It is action-oriented, funding and supporting "pilots" or "lighthouse projects" across Europe. These can be: The transformation of a derelict urban area into a green, social hub. The development of new, sustainable, and beautiful building materials. Community-led projects for renovating social housing.



At its most ambitious, the NEB is a cultural project. It seeks to define and promote a modern identity that is inherently sustainable, beautiful, and inclusive. It's about shaping not just buildings, but also the way we live, work, and interact with our environment.



The NEB Compass proposes directions for the development of NEB projects and lays the foundation for more detailed assessment tools.



The NEB Toolbox empowers public authorities to successfully bring New European Bauhaus principles to life. It offers a suite of practical tools to guide the planning and design of sustainable, beautiful, and inclusive projects.



The NEB Investment Guidelines provide a framework for integrating the core values of the New European Bauhaus into built environment projects. They offer practical strategies for applying these principles to the design of buildings, open spaces, and neighborhoods.



The NEB Self-Assessment Method is a comprehensive, multidisciplinary tool for evaluating how well projects align with the core values and ambitions of the New European Bauhaus.



The NEB Checklist is a compact tool for evaluating built environment projects against NEB values. Designed for small projects, it also helps with the preliminary screening and early-stage planning of larger initiatives.



Scan for more!

Arrival in Rovereto



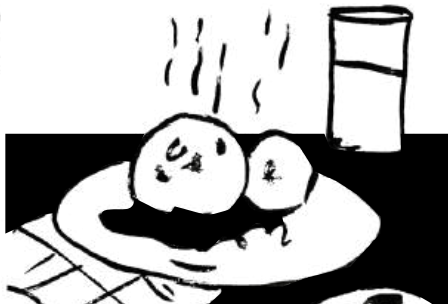
All partners arrived via train in Rovereto



Our cook of the day prepared a regional and meat-free lunch!



Which we ate outside in the little La Foresta garden



Here, we try to focus on experimental, meat- and dairy-free meals to be as inclusive as possible, while also aiming to go gluten-free



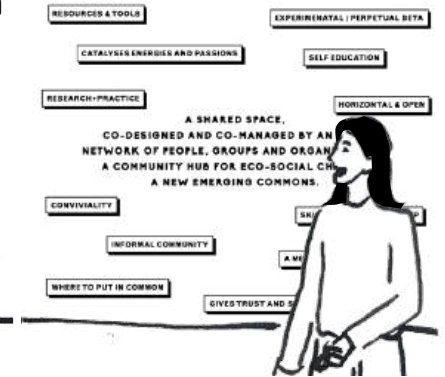
Coffee, coffee and more coffee



Insights and Exploration



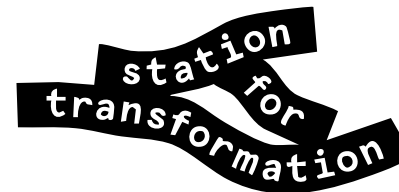
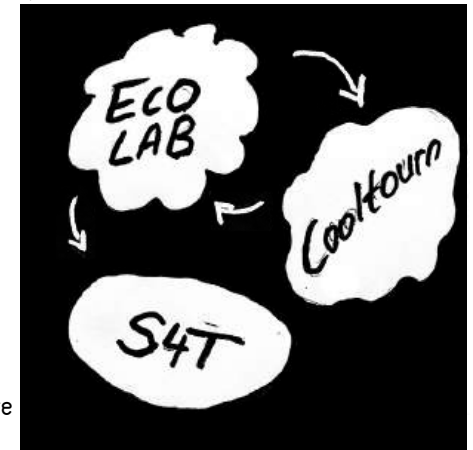
An introduction to La Foresta



talking about how it all started and which projects exist...



La Forest choose current projects to share with the group



Station for Transformation - modelling a train station as a replicable hub for public-civic engagement to tackle climate change and biodiversity challenges



Eco Lab is a project aimed at the entire Vallagarina community, inviting us to collectively take care of our mental health and wellbeing.

cooltours

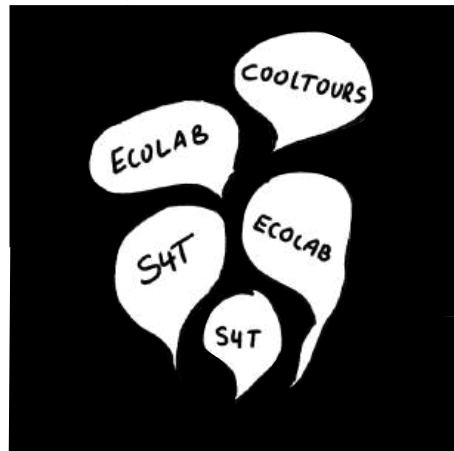
NEB Cooltours is a European project launched in November 2024. Involving La Foresta and the Vallagarina area in collaboration with two international partners: Trajna and Urbani Separe.



After the presentation we returned to the question:



To go into depth La foresta proposed to discuss the question in the three project frameworks



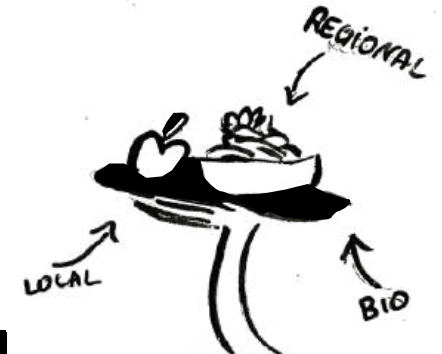
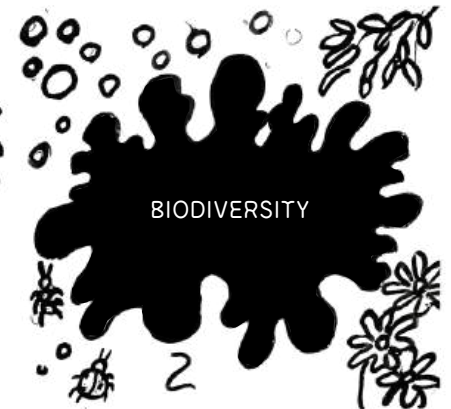
Time to explore our practices in depth!

Introduction of S4T:



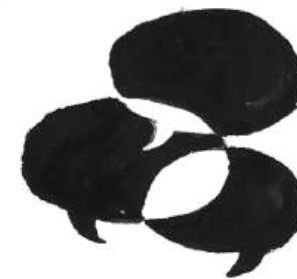
Introducing Station for Transformation.

The idea is to transform the current vacant spaces in the train-station into a public-civic hub to address the challenges of climate change and biodiversity loss in Vallagarina. The project includes the following spaces: a biodiversity kiosk, Co-Creation Space, a Canteen, S4T on Wheels, community space and transfer cities



Over the project's lifespan, a residency program is developed to bring in different perspectives and to support locals and initiatives

Food is a big subject. It is very important to consume local food grown with care.



Workshop S4T: In the Rovereto trainstation, the S4T group discussed how creating spaces for meeting and collaboration between public bodies and communities could promote the ecological transition of the Vallagarina region.

S4T aims to make concrete actions to address and mitigate the consequences of climate change and biodiversity loss accessible



The participants thought about algae subjectivities in water (lakes and rivers)

A seed nursery



Postcards with content that represents a sustainable future

Labs, workshops, residencies

Introduction of Ecolab:



Ecolab is a project aimed at the entire Vallagarina community that invites us to collectively care for our mental health and well-being. We do this by organizing free, open access - Making Together - workshops for all people.



This programme is being run in close collaboration with a mental health center in Rovereto.



Ecolab experiment with self-production, recycling, repairing and sewing, community gardening, carpentry & cooking



Sustainability includes social interaction. Social responsibility means respecting and ensuring equality for all people. The different needs should already be taken into account when planning events



Every month we co-organize a new programme of workshops. Various people join and offer ideas, and we collectively plan and organise to realise it



Ecolab tries to encourage local residents to share their passions and skills!

Workshop Ecolab:

here we got together to play with clay and to explore the question of how to communicate sustainability and what are our personal thoughts and feelings towards this question...



Clay, Hands & Words



We used the clay to form whatever we felt like making while talking about climate...



Feeling and speaking with and through earth

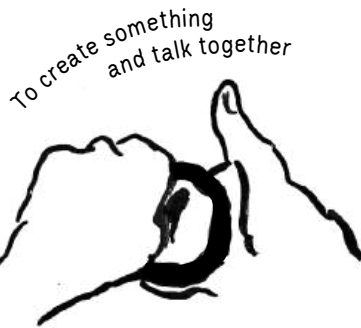


to remember that we can do things that we are capable of creating



to reclaim knowledge and a sense of "community"

it is also a strong rejection of capitalism, to realise you are not dependent on it and you can do it by yourself and with others



To create something and talk together



This is more about improvising and embracing the unknown



giving my hands something to shape and feel no matter the outcome and sharing personal insight

to empower people by not just focusing on the environmental question but also the social aspect



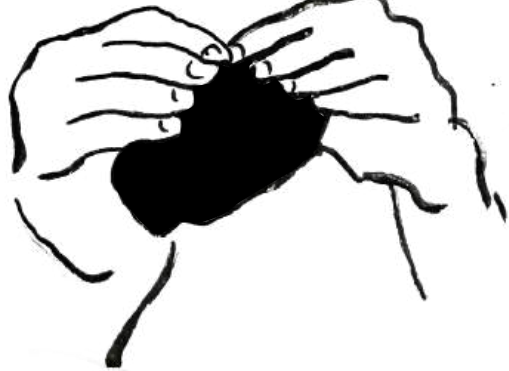
it is important to meet people where they are at and come together enable to grow our understanding



of course, it is difficult sometimes to reach people, but through different and gentle communication and



In a way it is a safe space for the activity of creativity



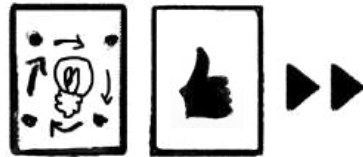
curiosity it is worth a try

Introducing Cooltours: *cooltours*

Cooltours involves La Foresta and two international partners: Trajna (Ljubljana, Slovenia) and Urbani Separe (Rijeka, Croatia). The Krater collective is a creative laboratory situated in a rewilded construction site. Urbani separe, a collective that brings culture and green practices to places and communities where they are truly lacking.



A two-year project aims to develop and test five prototypes for eco-cultural tourism in various cities.



Its goal is to move beyond mass tourism by creating activities that connect tourists directly with local communities, culture, and nature, turning them into active participants rather than just consumers.

The project is divided into two phases. Development: Multi-disciplinary teams, including students, will co-design the prototypes. Testing: The prototypes will be tested in the field.



Guided by the “beautiful, sustainable, together” principles of the New European Bauhaus, the initiative seeks to enhance local sustainability, biodiversity, and cultural initiatives



Workshop Cooltours: The group explored different ways to approach tourism and interlink it with local businesses by providing for example workshops...

Workshop Cooltours

cooltours





We speak about the crisis without speaking about it. People are aware and may get irritated quickly, so maybe we create experiences in which they already "live" the change...

Our goal is to challenge mainstream and mass tourism models in the participating cities by promoting new forms of eco-cultural tourism

We could cooperate with Eco Lab and try to create workshops with focus on Eco-Tourism...

We could facilitate methods so as to raise awareness in hotels for example...

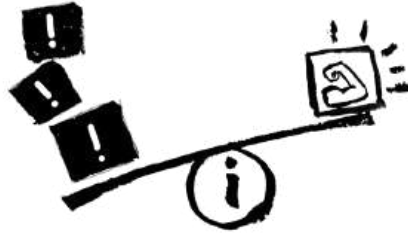
The journey of CultureAlps shows that the climate crisis is not only a scientific challenge, but also a cultural and social one. It reminds us that through communication, collaboration, and a commitment to continuity we are able to transform overwhelming emotions into a source of action.



As we design our programmes, we should be mindful that each of us is driven by different motivations:

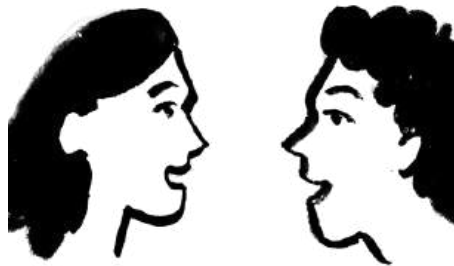
What moves people to act in the face of climate change?

Concept: Torsten Grothmann/
klimafakten.de



Pure knowledge transfer is not enough. Knowledge alone rarely leads to climate action - meaning activities that advance climate protection or climate adaptation. Many other factors influence whether people can be motivated to act on climate.

Information about climate problems should be balanced with action-oriented information to prevent feelings of helplessness.



Personal face-to-face communication is often more effective at motivating action than impersonal written information. Not every intention to act is immediately carried out.



Inner and external barriers to action often need to be overcome.

Triggers



Triggers for climate-related considerations are diverse. The following triggers do not influence in the order shown, but individually or in combination: Non-personal knowledge transfer (e.g., on websites)/ Personal knowledge transfer (e.g., through "trusted messengers")/ Learning from role models/ Learning through experience etc...

Action-related considerations



How a person answers the question "What can and should I do to face climate change?" depends on psychological factors such as: Action knowledge on climate protection and adaptation/ Beliefs about possibilities for action and their effectiveness/ Cost/benefit considerations / Perceived barriers/ Emotions and attitudes/ Social, group, and personal norms/ Value systems

Problem-related considerations



How a person answers the question "What does climate change mean for me and for people and things important to me?" depends on psychological factors such as: Knowledge about climate change and its consequences/ Trust in media and climate science/ Problem and risk perception/ Memory of personal damage caused by climate change/ Emotions/ Value systems/ Personality factors/ Identity concepts...

Intention



Whether an intention is translated into climate action depends on: Clarity and strength of the intention/ Favorable opportunity/ Internal and external barriers to action/ Emotions/ Habits/ Social support/ Inner dialogue examples: "Yes, I will do something!"/ "What does climate change mean for me and for those important to me?"/ "What can and should I do to respond to climate change?"

A variety of contextual factors can support or hinder climate action: social, cultural, economic, political, infrastructural, and environmental context.

CultureAlps: Connect, Share, Act!

Project Partners:

CIPRA International:

Maja Kogovsek

Maja Mathias

inatura:

Ruth Swoboda

Ines Linke

Mathias Gort

DOMUS:

Toni Büchel

Caroline Hilti

La Foresta:

Carmen Gonzalez Miranda

Justine Hartwig

Bianca Elzenbaumer

Workshops:

S4T: Sebastiano Moltrè

Ecolab: Sara Spiraleri

Cooltours: Chiara Mura

Design and illustrations:

Justine Hartwig

[Font:Velvelyne](#)

Designed by Mariel Nils, Manon Van der Borght,

with the contribution of Raphaël Bastide, Benjamin Dumond

License CUTE (Conditions d'utilisations typographiques engageantes)



Funded by the European Union. Views and opinions expressed are however those of the author(s) only and do not necessarily reflect those of the European Union or the European Education and Culture Executive Agency (EACEA). Neither the European Union nor EACEA can be held responsible for them.