

Building a social, educational
and inclusive mountain
environment.



Via Alpina Youth project (Erasmus+)
« Access to the mountains means access to society. »

Thursday 16th November 2023



www.montagne.org

OUR OBJECTIVES

Ò ACCESS FOR ALL

To make the mountain environment accessible to underprivileged communities and people in difficult situations (social issues, school dropouts, sickness or disabilities)

Ò MOUNTAINS FOR SOCIAL INCLUSION

To encourage social services to consider the mountain environment's potential for social and educational interventions;

Ò KNOWLEDGE PATHWAYS

To exchange knowledge to create pathways for social and educational experiences in the mountains.

« Since 1995, EPPM has become the bridge between the mountain world and the social/educational sector »





OUR 4 PROGRAMMES



SOCIAL MOUNTAIN

To support specialized social services to organise educational trips in the mountains

INCLUSIVE MOUNTAIN

To support the inclusion of people who live in the mountains but who do not naturally have access to them.



MOUNTAIN SPORTS FOR ALL

To develop inclusive mountain sport clubs to allow people in vulnerable situations to climb or hike in completely safe and friendly environment.

TRAINING

To inspire and train social workers to use activities in the mountain environment as an educational tool.





OUR 4 PROGRAMMES



SOCIAL MOUNTAIN

To support specialized social structures to organise educational trips in the mountains

INCLUSIVE MOUNTAIN

To support the inclusion of people who live in the mountains but who do not naturally have access to them.



MOUNTAIN SPORTS FOR ALL

To develop inclusive mountain sport clubs to allow people in vulnerable situations to climb or hike in completely safe and friendly environment.

TRAINING

To inspire and train social workers to use activities in the mountain environment as an educational tool.





SOCIAL MOUNTAIN- EDUCATIONAL TRIPS: OVERVIEW

- On demand trips;
- In collaboration with and financed by specialized services;
- Targeting specific communities, the specialized services are working with;
- Pre-determined social and educational objectives inspire the type of activities;
- Specific methodology applied to ensure social and educational objectives are met;
- Continuous finetuning with EPPM staff and specialized services to ensure optimum outcomes;





EDUCATIONAL TRIPS: TARGET GROUPS & SPECIALISED SERVICES

- Protected minors and young migrants
Collaboration with « l'Aide Sociale à l'Enfance (ASE) » = Child welfare programme
- Young offenders monitored by judicial protection
Collaboration with « Protection Judiciaire de la Jeunesse (PJJ) » = Youth Judicial Protection
- People with disabilities
Collaboration with « structures médico-sociales » = centres for people with disabilities
- Prisoners
Collaboration with prisons and guards.
- Minors and young adults monitored by specialised prevention services
Collaboration with specialised prevention services
- Students with difficulties
Collaboration with « Education Nationale » = education system





EDUCATIONAL TRIPS: METHODOLOGY

1. Contact by specialized services
2. Decide joint educational objectives
3. Propose adapted activities and price
4. Prepare the trip (3 / 4 mois)
 - Choice of accommodation
 - Contact professionals in function of the target group
 - Contact with target group to prepare them for the opportunity
5. In-person meeting with target group and specialized services
6. Trip delivery adapting to individual educational objectives

Continuous dialogue between EPPM, specialized services and target communities to ensure optimum outcomes.





EDUCATIONAL TRIPS: SPECIFIC OBJECTIVES, SPECIFIC ACTIVITIES

Objective	Activity
Challenging yourself Team building Building community life	<u>Mountaineering</u> Physical challenge In rope groups Stay in mountain huts
Confidence in yourself Confidence in others	<u>Climbing</u> To climb To belay
Autonomy Group cohesion Living together	<u>Multi-day trekking</u> Carrying your own gear Getting there together Stay in tipis







INCLUSIVE MOUNTAIN - - MOUNTAIN NEIGHBORHOODS

Organised and financed (sponsoring and partnership) by EPPM

Target groups

People living in working-class neighborhoods in mountain towns who do not have access to the mountains for social, cultural or economic reasons.

Methodology

=> Progressive activities to build desire to explore the mountains

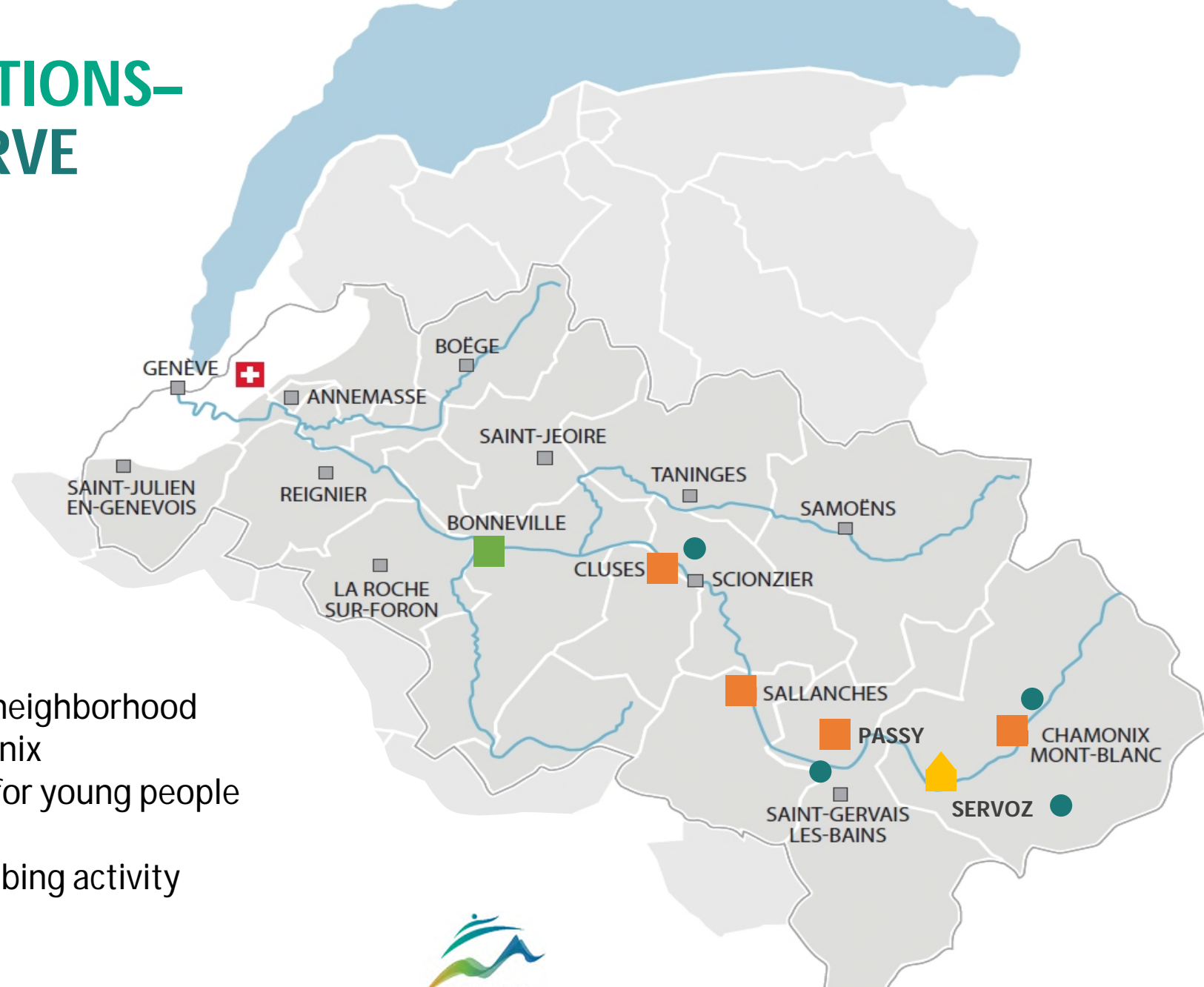
1. Mural
 2. Orienteering activity
 3. Neighborhood festival
 4. Climbing activity
 5. Mountaineering activity
- In the neighborhood
- In the mountains

In collaboration with local street workers and social services.



PREVIOUS EDITIONS– VALLÉE DE L'ARVE

2020 Chamonix
2021 Sallanches
2022 Passy
2023 Cluses
2024 Bonneville



Extra outcomes:

- Climbing wall at neighborhood festival in Chamonix
- Mountain group for young people from Sallanches
- Women only climbing activity





EPPM IN NUMBERS

30

beneficiaries

8^s

projects

per year

300-400K€

annual budget



3

employees

1

board of directors

17

board members

50

mountain professionals

OUR PARTNERS AND SUPPORTERS



MINISTÈRE
DE LA JUSTICE

*Liberté
Égalité
Fraternité*



MINISTÈRE
DE L'ÉDUCATION
NATIONALE,
DE LA JEUNESSE
ET DES SPORTS

*Liberté
Égalité
Fraternité*

S AGENCE
NATIONALE
DU SPORT



haute savoie
le Département



PRÉFET
DE LA HAUTE-SAVOIE

*Liberté
Égalité
Fraternité*



SERVOZ
MONT-BLANC



FONDATION
snowleader



ARC'TERYX

MERRELL **M**



Fondation



FORCLAZ



THANK YOU!

www.montagne.org

Margo de Lange
eppm@montagne.fr

Boris Fournier
Fournier2008@orange.fr

Damien Urbain
damien@montagne.org

