

Soča Valley

Kayaking licences for sale in advance,
proceeds fund boat access sites:
<https://dovolilnice.dolina-soce.si/>

Cipra, 22.11.2021













Permits and prices



DNEVNA DOVOLILNICA **DAILY RIVER PASS**
Dolina Soče Soča Valley

DNEVNA OSEBNA DOVOLILNICA
€ 3 z DDV

The card features a yellow background with a central illustration of a person in a kayak. The text is in black and green. The Slovenian and English names for the permit are at the top, and the price is at the bottom.



TEDENSKA DOVOLILNICA **WEEKLY RIVER PASS**
Dolina Soče Soča Valley

TEDENSKA OSEBNA DOVOLILNICA
€ 16 z DDV

The card features a blue background with a central illustration of a person in a kayak. The text is in black and green. The Slovenian and English names for the permit are at the top, and the price is at the bottom.




SEZONSKA DOVOLILNICA **SEASONAL RIVER PASS**
Dolina Soče • Soča Valley

Ime • Name • Name
Priimek • Surname • Nachname • Cognome

SEZONSKA OSEBNA DOVOLILNICA
€ 30 z DDV

The card features a red background with a central illustration of a person in a kayak. It includes two white input fields for personal information. The text is in black and green. The Slovenian and English names for the permit are at the top, and the price is at the bottom.



DNEVNA • DAILY RAFTING
Dolina Soče • Soča Valley

RAFTING DNEVNA DOVOLILNICA
€ 50 z DDV

The card features a yellow background with a central illustration of a group of people in a raft. A small icon of a document with a checkmark is in the top right corner. The text is in black and green. The Slovenian and English names for the permit are at the top, and the price is at the bottom.




SEZONSKA • SEASONAL RAFTING
Dolina Soče • Soča Valley

RAFTING SEZONSKA DOVOLILNICA
€ 500 z DDV

The card features a red background with a central illustration of a group of people in a raft. A small icon of a document with a checkmark is in the top right corner. The text is in black and green. The Slovenian and English names for the permit are at the top, and the price is at the bottom.

Permits and prices

PERMITS | PLACE ORDER | CART | ENGLISH



DAILY RIVER PASS

€ 3 VAT inc.

Navigation on the Soča and Koritnica rivers is allowed between **15 March to 31 October**, from **9 a.m. to 6 p.m.** A permit is required to navigate the rivers. Please make sure you are acquainted with all information and warnings posted on www.soca-plovba.si prior to entering the river. If you are not familiar with the river, it is recommended to hire a qualified guide.

Personal daily permit is the permit for the usage of the entry and exits points for navigation with vessels carrying up to 3 persons and the necessary equipment. The permit or its serial number has to be kept by every user for the complete duration of navigation and while using the entry and exits points. The permit is only valid for the date stated on the permit.

First name*

Last name*

Document ID*

Permit date*

ADD TO CART

The reasons for introducing the online permits

Online permit sales were established at a time when agencies and Tourist information centers were closed due to the epidemic. In order for the kayakers to be able to go to the river without hindrance and meet the requirements of the Decree.

In addition to that we wanted to make it easier for the users to purchase The permits.

An online control of valid permits has also been established by the Inter-municipal Administration.

The reasons for introducing the online permits

Navigation on individual inland waters in its area is regulated by the local community in accordance with natural conditions with a general act on determining the navigation regime for the safety of navigation of everyone involved.

In determining the navigation regime, the local community must take into account the provisions of this Act and regulations issued on its basis, regulations on environmental protection, nature and water conservation, freshwater fishing and spatial planning, and natural conditions and other conditions that ensure the protection of human life and environment.



Navigation Regime

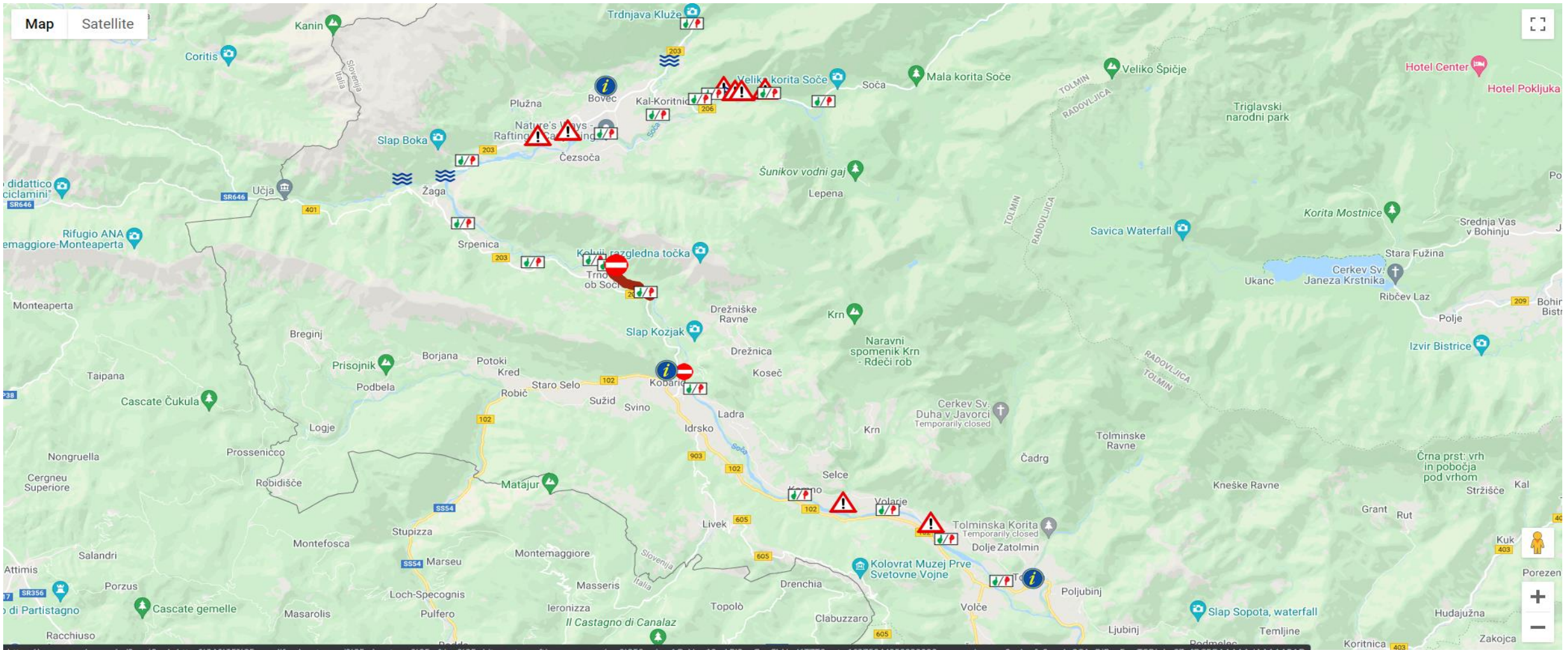
The navigation regime on a single inland waterway, connecting two or more local communities, is regulated by local communities by agreement. Navigation regime of volume - determination of the

fairway and outline of the area where navigation is permitted for commercial, tourist, sports and recreational purposes, taking into account the danger of rising waters or other exceptional conditions;

- designation of the river area management;
- determination of the type of vessels and their propulsion;
- determination and marking of the entry and exit points according to the type of navigation;
- designation of the operator of the entry-exit point;
- display of bathing water area;
- determination of the time during which navigation is permitted;
- prohibition of navigation due to the specificity of the area, inappropriate weather or dangerous conditions;
- other conditions ensuring the protection of human life and the environment.



Soča Valley area



Navigation Regime



Entry and exit allowed at 18 Entry / exit points where there are signboards, QR code.

Navigation in the fairway is allowed from 15 March to 31 October during the day, with entry into the river from 9 am onwards and exit from the river (Srpenica 1)

Srpenica 2 and Trnovo 1 and at the exit point Trnovo 2 until 8 pm; - at other entry and exit points and the exit point until 6 pm.

Monitoring



I FEEL SLOVENIA

Dolina Soče

ZDAJ JE ČAS.
Za aktiven oddih.

Moja Slovenija

#ifeelsLOVEEnia #mojaslovenija #DolinaSoce

www.dolina-soce.si

I FEEL SLOVENIA

Dolina Soče

ZDAJ JE ČAS.
Za obisk kraja
evropskega spomina.

Moja Slovenija

#ifeelsLOVEEnia #mojaslovenija #DolinaSoce

www.dolina-soce.si

I FEEL SLOVENIA

Dolina Soče

ZDAJ JE ČAS.
Za odkrivanje skritih
kotičkov.

Moja Slovenija

#ifeelsLOVEEnia #mojaslovenija #DolinaSoce

www.dolina-soce.si

I FEEL SLOVENIA

Dolina Soče

ZDAJ JE ČAS.
Za drugo
perspektivo.

Moja Slovenija

#ifeelsLOVEEnia #mojaslovenija #DolinaSoce

www.dolina-soce.si

I FEEL SLOVENIA

Dolina Soče

ZDAJ JE ČAS.
Za odkrivanje skritega
biseru ob reki Soči.

Moja Slovenija

#ifeelsLOVEEnia #mojaslovenija #DolinaSoce #visitKamnik

www.dolina-soce.si

I FEEL SLOVENIA

Dolina Soče

ZDAJ JE ČAS.
Za pogled v preteklost.

Moja Slovenija

#ifeelsLOVEEnia #mojaslovenija #DolinaSoce

www.dolina-soce.si

I FEEL SLOVENIA

Dolina Soče

ZDAJ JE ČAS.
Za družinsko avanturo.

Moja Slovenija

#ifeelsLOVEEnia #mojaslovenija #DolinaSoce

www.dolina-soce.si

I FEEL SLOVENIA

Dolina Soče

ZDAJ JE ČAS.
Za odkrivanje skritih
kotičkov.

Moja Slovenija

#ifeelsLOVEEnia #mojaslovenija #DolinaSoce

www.dolina-soce.si

I FEEL SLOVENIA

Dolina Soče

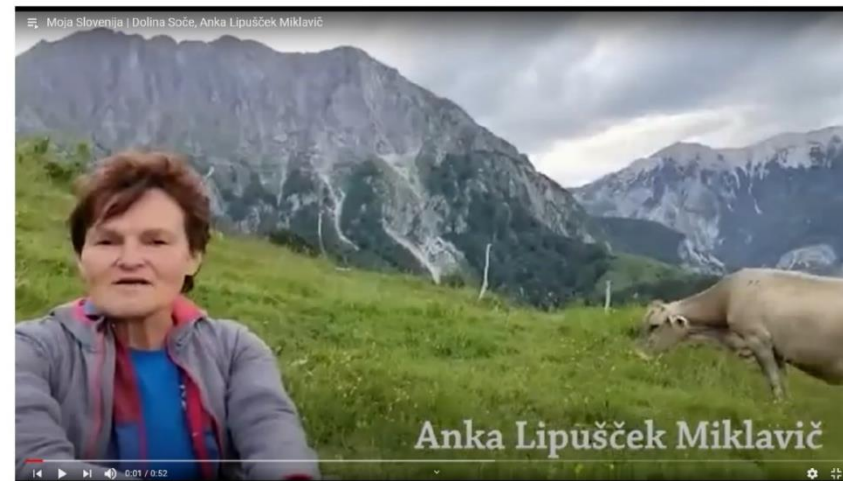
ZDAJ JE ČAS.
Za smaragdno
osvežitev.

Moja Slovenija

#ifeelsLOVEEnia #mojaslovenija #DolinaSoce

www.dolina-soce.si

Ambassadors sending our messages across...



Vision

Evergreen ▷ Evergreen is committed to protecting the environment and year-round operation of the destination.

Outdoor ▷ Includes all activities that guests perform in nature. On the one hand, these are different sports, on the other hand, the search for peace, energy and relaxation in nature.

Boutique and personalized ▷ As opposed to mass tourism and unsustainable concepts. ▷ Tailored to individual visitors and with their experience in mind.

Experiences ▷ Experiences that move from the service level to a new guest experience. They are emotionally strong, with new insights, learning and self-awareness.

FUTURE

- **One strategy for Dolina Soče 2025-2030**
- **Tight cooperation with Julian Alps ass. and Triglav national park**
- **Development of new products**
- **Sustainable mobility**
- **User friendly management of tourist movements**

Dolina Soče

Thank you

Suzana Konec - suzana.konec@kobarid.si
Viljam Kvalic – viljam.kvalic@dolina-soce.si

